



## **Radar Arch / Accessory Arch Instructions and Owners Manual**

**Fishmaster, Inc.**  
**www.Fishmaster.com**  
**Support@Fishmaster.com**

**Phone: 877-777-8693**  
**Fax: 877- 437-6210**

**THANK YOU FOR YOUR BUSINESS. IF YOU ARE NOT COMPLETELY SATISFIED IN ANY WAY WITH YOUR RADAR ARCH / ACCESSORY ARCH, PLEASE CONTACT US. Our entire purpose as a company is to offer great products at affordable prices that our customers love.**

**Please take a few minutes to read the installation instructions and become familiar with the RADAR ARCH / ACCESSORY ARCH installation before beginning to ensure a high quality, trouble free installation and use. If you have any questions during your installation give us a call at 877-777-8693 or e-mail Support@Fishmaster.com**

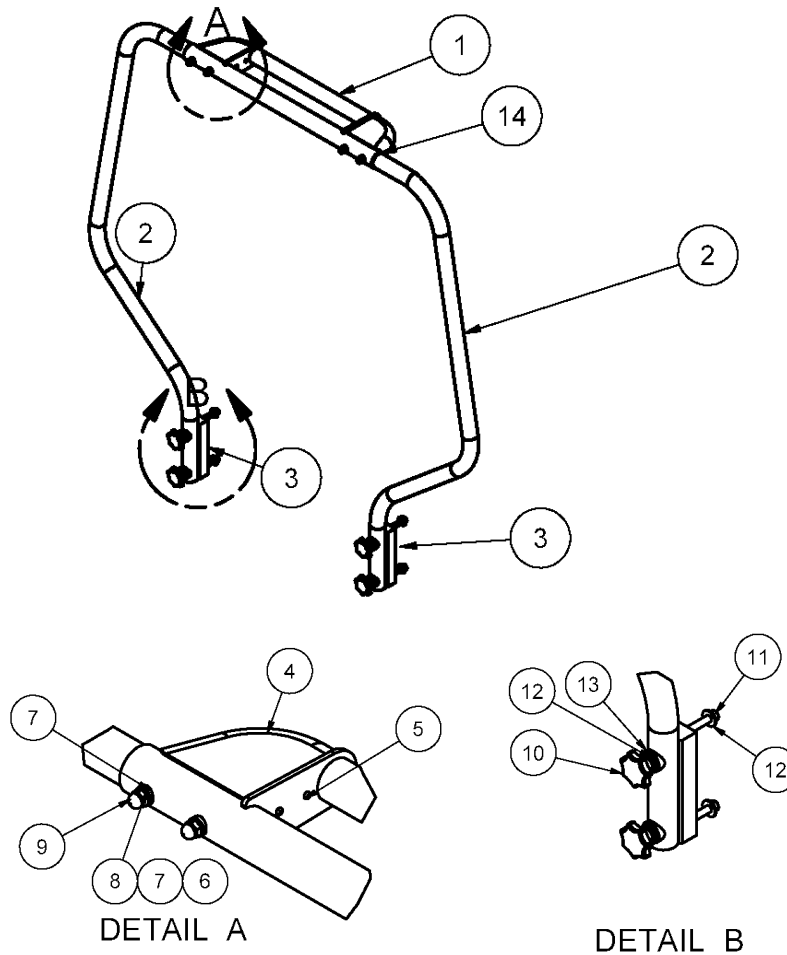
### **IMPORTANT NOTES ON INSTALLING AND USING YOUR RADAR ARCH / ACCESSORY ARCH**

- **Read entire manual before installation**
- **Grease all bolts**
- **Check bolts after first few uses and retighten when needed**
- **Be careful around low bridges or docks where the radar arch may hit**
- **Do not use to pull tubes, boats, skiers or wakeboarders**
- **You can add any accessory for 1.90" OD pipe or tubing**
- **Great to add rod holders, navigation light and spreader lights**
- **Wiring can easily be run inside the tubing**

#### **Fishmaster, Inc Warranty**

**Fishmaster warrants this product against manufactures defects for a period of five (5) years. Anodized surfaces are specifically excluded, as their care and use cannot be controlled by the manufacturer. Any modifications or improper use, not approved in writing by Fishmaster shall void this warranty. Fishmaster is not responsible for personal injury or damage to the boat caused by the use of this product. Fishmaster's obligation under this warranty shall not include any transportation charges or costs of installation or any liability for direct, indirect or consequential damages resulting from delay or improper installation. If you need to make a warranty claim contact Fishmaster at 877-777-Tower to receive a return authorization number which is required for all claims. Defects must be reported within 30 days of discovery.**

## Fishmaster Radar Arch / Accessory Arch Parts List



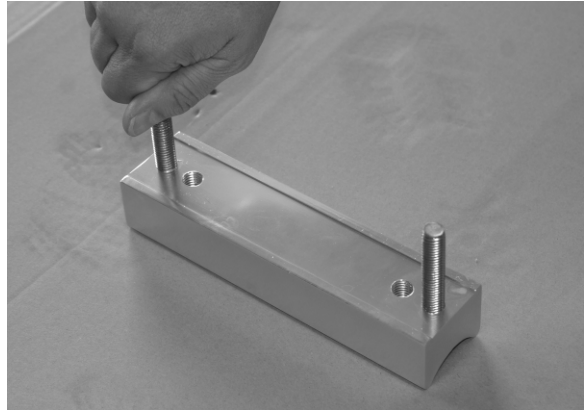
Parts List			
ITEM	QTY	PART NUMBER	DESCRIPTION
1	1	CROSS TUBE ASSEMBLY 01	
2	2	RIB TOWER LEG 01	
3	2	MOUNTING BRACKET 01	
4	2	TOWER ENDCAP	
5	4	8X1.50 TRUSS HEAD SCREW	BAGGED HARDWARE
6	4	M10X75 TRUSS HEAD BOLT	BAGGED HARDWARE
7	8	M10X2.14 TUBING WASHER	BAGGED HARDWARE
8	4	M10 WASHER, STAINLESS STEEL	BAGGED HARDWARE
9	4	M10 ACORN NUT, STAINLESS STEEL	BAGGED HARDWARE
10	4	M12 LONG KNOB ASSEMBLY	BAGGED HARDWARE
11	4	M12X75 SHCS, STAINLESS STEEL	BAGGED HARDWARE
12	8	M12 WIDE FLAT WASHER, STAINLESS STEEL	BAGGED HARDWARE
13	4	1.90 X .50 TUBE WASHER	BAGGED HARDWARE
14	2	PLASTIC SLEEVE, .020 INCH THICK SHEET (6X6)	BAGGED HARDWARE

### INSTALLATION

1. First determine if you would like to mount the arch on the inside or outside of the transom if you have a tiller steer motor. Normally you will mount it to the inside for easy access to the quick release knobs. If you have a remote steering with a helm you will normally need to mount to the outside of the transom to avoid interference with the steering components.
2. First determine approximately where you will install the brackets on the transom and make sure you are clear on the inside and outside of the transom of any cleats, lifting rings or any other obstruction. Measure this dimension for step 5. The arch can mount anywhere from 24" to 40" wide at the outside measurement between the mounting brackets.
3. Lay everything out on cardboard, blankets, carpet or other soft surface to prevent scratching the finish.



4. Slide the tower legs into the cross tube while inserting the sleeve into the cross tube. The sleeve is optional and in installations close to 24" wide between the mounting brackets it may not be able to be used. When the bolts are installed to hold the cross tube and legs together any clearance will be removed when the bolts are tightened if the sleeve is used or not.
5. Adjust the legs into the cross tube to the dimension you determined in step 2 while centering the cross tube between the legs. You can use masking or painters tape to hold the cross tube in place with the legs. The rotation of the cross tube is not important until we drill holes in the tubes.
6. Use the quick release knobs to attach the mounting brackets to the legs. These will attach to the two inside holes and the outside holes are used to attach the bracket to the transom in a later step of the installation.



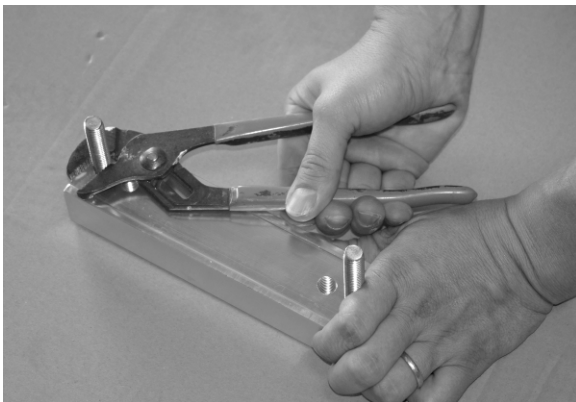
7. With the help of a second person move the radar arch to the transom of the boat and check the fit of the bracket locations. You can adjust the legs in and out of the cross tube to find the ideal location. Next using a pencil mark the sides, top and bottom of both brackets.



8. Remove the legs from the bracket and use the bracket and a pencil to mark the OUTER HOLES of the bracket on the transom. You can have a second person hold the bracket while you drill pilot holes instead. Drill 1/2" hole at each mounting location. ALWAYS RUN THE DRILL IN REVERSE UNTIL YOU ARE THROUGH THE GELCOAT TO PREVENT CHIPPING. Also sanding or using a larger drill bit to remove the edge from the hole will prevent the possibility of future chipping or cracking.



9. Screw the threaded studs into the back of the mounting bracket at each end and use channel locks or pliers to make sure it is seated all the way.



10. Attached the bracket to the transom with a washer and locknut as shown. Be sure to put 3M - 5200 Marine Adhesive or equivalent in the hole from the back and on the threads that will be in the transom. It is not shown here but also put 5200 behind the washer. Snug lightly but do not tighten yet.



11. Return the legs and cross tube assembly to the transom and attach the legs to the bracket using the quick release knobs and tighten quick release knobs as much as possible by hand. Now tighten the lock nuts so the brackets are aligned with the legs.
12. Next we will bolt the cross tube and legs together. First determine if you want the accessory tube on the cross tube to face fore or aft. Either way is fine and it is just personal preference. You may want to consider first which accessories you plan to add. In the installation below the accessory tube was mounted for with a spreader light and a navigation light on the main cross tube.



13. Once you have the cross tube assembly where you want it located drill each hole on each side of the cross tube through the leg. Do not drill all the way through, drill one side then go to the other side and drill with a 10mm or 13/32" drill bit. If you have problems with the drill bit "drifting" or moving around on you it can be easier to drill a small pilot hole with a 1/8" or 3mm bit.



14. Bolt the cross tube to the legs as shown using flat and black tubing washers as shown below. Tighten until there is no play between the tubes.



15. The last step is to attach the tower end cap to the sides of the cross tube assembly as shown ABOVE using the provided screws.
16. Double check all hardware and make sure everything is tight. Check all hardware after each use. The Fishmaster radar arch is silent by design. If you ever hear any noise from the radar arch then hardware is loose and needs to be tightened.

Thank you for your business and let us know if you have any comments about the installation.